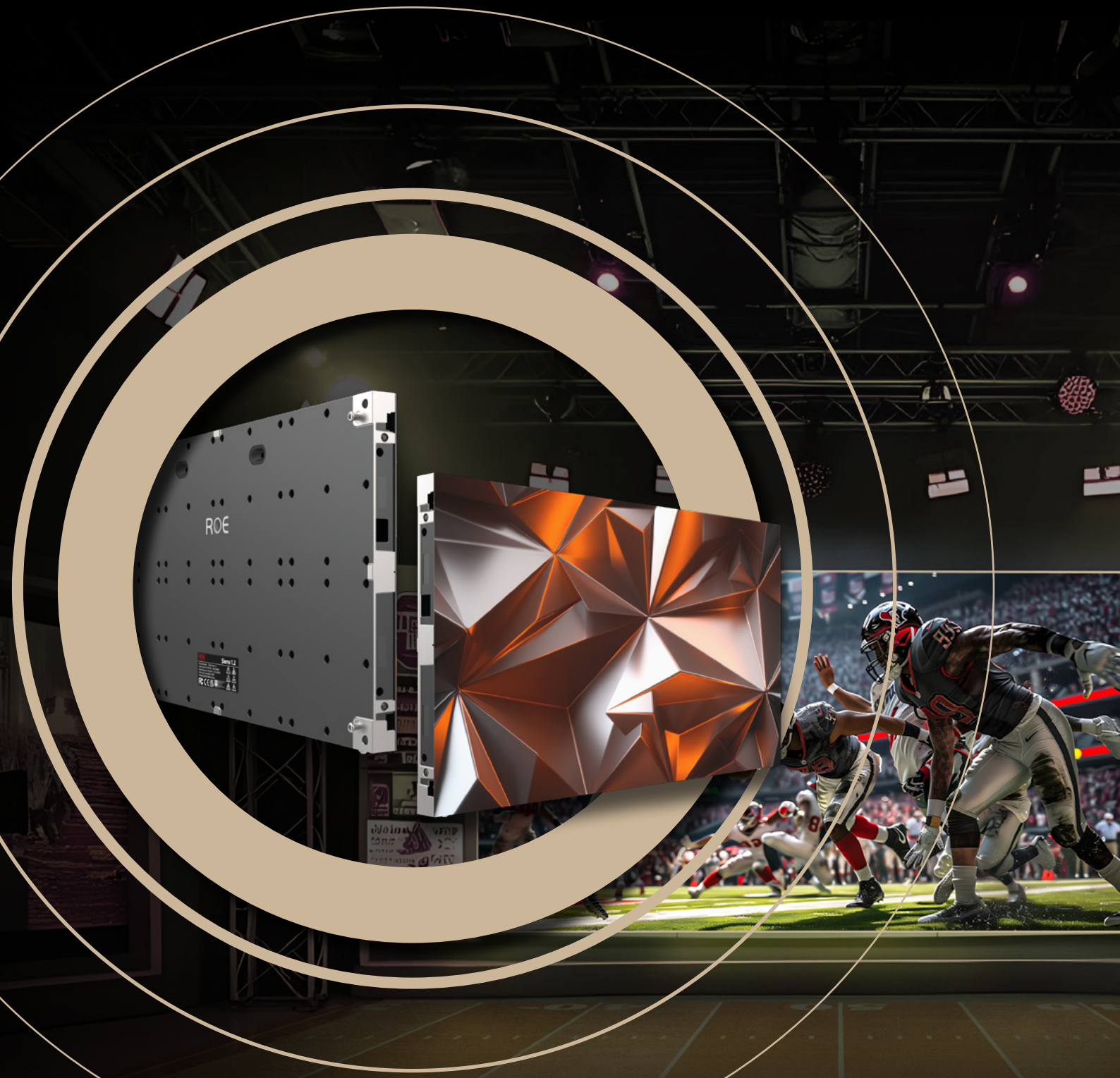


**ROE** Display  
Solutions



## Sierra 1.2

High-Efficiency LED Solution for Broadcast

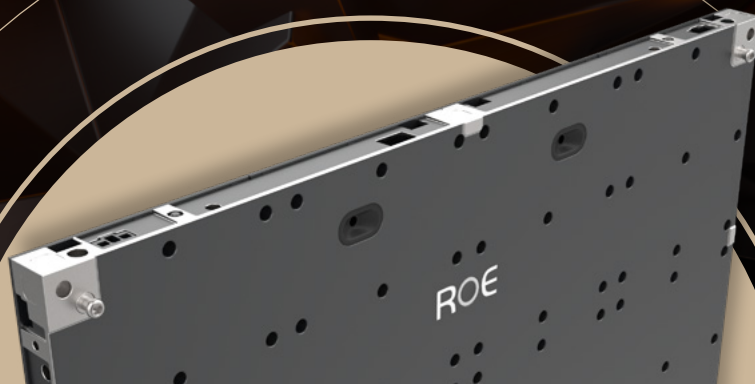
INDOOR FIXED INSTALL

# Sierra LED Platform

## Meet Sierra, Ideal Solution for Broadcast

ROE Visual presents the next chapter in innovative LED technology with Sierra. Fitted with flip-chip 4-in-1 LED technology, Sierra offers reduced reflection, sharp contrast, and a flawless black surface.

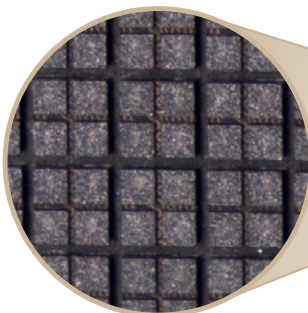
The Sierra LED panels are ideal for system integration. Initially developed for broadcast studio environments, these innovative LED panels will go beyond the borders of broadcast productions to any bright environment where high contrast is essential.



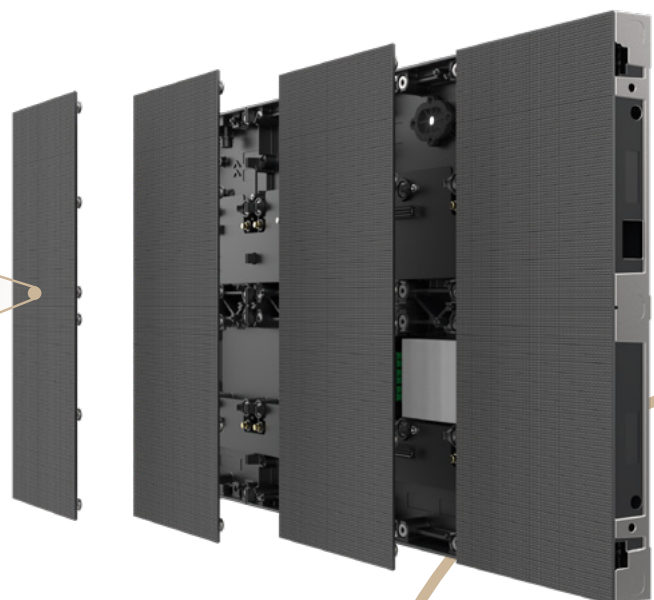
W The low-scan design minimizes screen flicker and reduces visible scan lines when viewed through a camera. This makes the product ideal for use in TV stations, studios, and other broadcast settings. //

## Striking Contrast and In-camera Perfection

With an Optimized scanning ratio design and an anti-reflection deep black surface featuring 4-in-1 LEDs, Sierra provides a mesmerizing visual experience optimized for exceptional in-camera performance.



Flip chip 4 in 1 LED

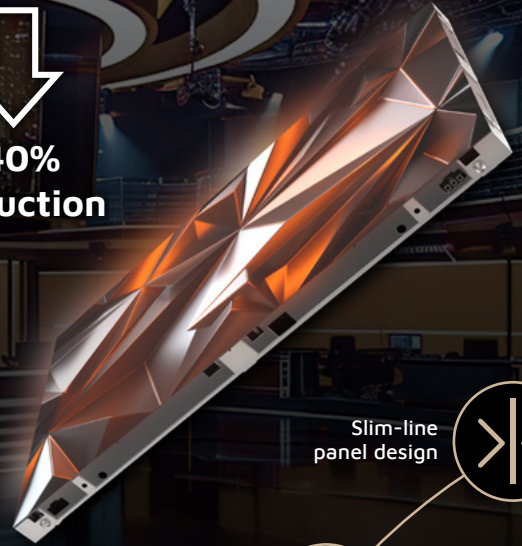


## Energy Efficiency Redefined

Utilising advanced technologies such as common cathode and flip chip Micro LED, along with a high-efficiency power supply, Sierra LED panels achieve up to 40% lower energy consumption compared to traditional LED panels. The panels' stable, low operating temperatures enhance color performance and significantly extend their lifespan.



**40%  
reduction**



Slim-line  
panel design



16:9 ratio  
in panel design.  
Native 4K

**16:9**



Highly efficient  
power supply



Low  
scan ratio



High  
black  
level



Front  
service



HDR  
technology

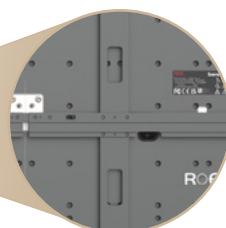
**HDR**

### Sierra 16:9 ratio



## Sleek Design Meets Precision

With a slim profile of just 55mm, Sierra panels combine modern elegance with functionality. Featuring a standard 16:9 aspect ratio and dimensions of 600mm x 337.5mm, they are designed for seamless integration. The high-precision mounting frame ensures effortless installation, making them a perfect fit for any space.

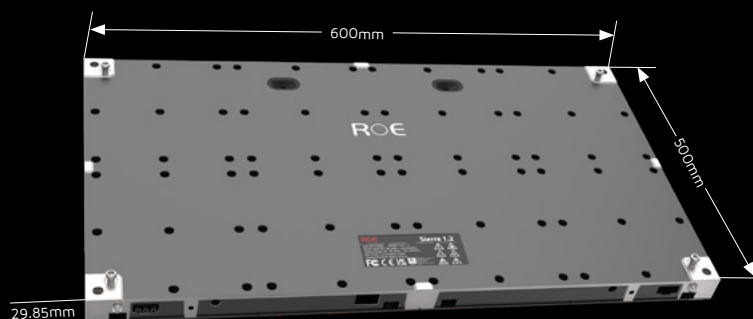


# Specifications

Sierra	Sierra 1.2
Pixel Pitch	1.25mm
Max Brightness Calibrated	1000nits
Panel Dimension	600mm x 337.5mm x 29.9mm   23.62" x 13.29" x 1.18"
Panel Resolution (H x V)	480 x 270
Panel Weight	5.68kg; 12.52lbs
Power Consumption Max / Average	100W / 50W
BTU Max / Average	340 / 170
Transparency	Solid
Serviceability	Front
LED Configuration	Flip chip 4 in 1 LED
Viewing Angle Horizontal	160°
Viewing Angle Vertical	140°
Refresh Rate	3840Hz
Gray Scale	15bit
Frame Material	Aluminum Alloy
Installation	Wall Mounting
Processing Platform	Megapixel
Operational Temp / Humidity	-20°-45°C, 10-90%RH   -4°-113°F, 10-90%RH
Storage Temp / Humidity	-40°-60°C, 10-90%RH   -40°-140°F, 10-90%RH
IP Rating	IP40

Notes: The specifications are for reference, actual values may vary.

## Dimensions



[www.roevisual.com](http://www.roevisual.com)

ROE China | ROE US | ROE EU | ROE UK | ROE JP | ROE ME | ROE AUS

[roe@roevisual.com](mailto:roe@roevisual.com)