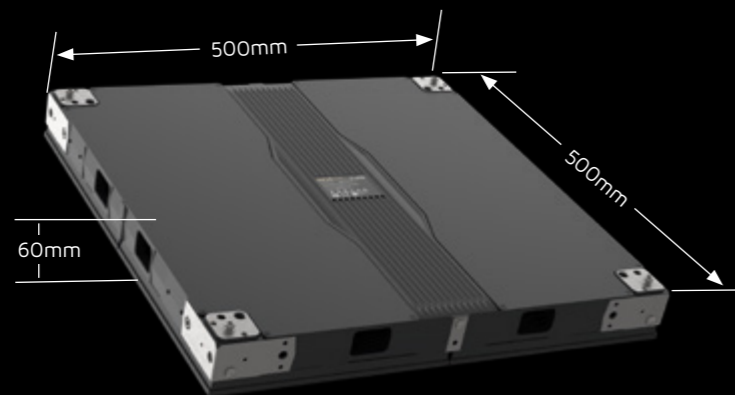


Specifications

Jasper	Jasper 2.6	Jasper 3.9
Pixel Pitch	2.60mm	3.91mm
Max. Brightness Calibrated	1,500nits	1,400nits
Panel Dimension	500 x 500 x 60 mm 19.7" x 19.7" x 2.3"	500 x 500 x 60 mm 19.7" x 19.7" x 2.3"
Panel Resolution (H x V)	192 x 192	128 x 128
Weight Per Panel	7.5kg; 16.53lbs	7.5kg; 16.53lbs
Power Consumption Max/Average	190W/95W	160W/80W
BTU Max/Average	648 / 298	546 / 251
Transparency	Solid	Solid
Serviceability	Front / Rear	Front / Rear
Curving (Concave & Convex)	Concave 10°-Convex 10° (customized)	Concave 10°-Convex 10° (customized)
Installation	Hanging/Stacking/Mounting	Hanging/Stacking/Mounting
LED Configuration	SMD 1515 Black	SMD 2020 Black
Viewing Angle Vertical	140°	140°
Viewing Angle Horizontal	160°	160°
Multiplexing	16	16
Refresh Rate	3840Hz	3840Hz
Gray Scale	16bit	16bit
Frame Material	Diecast Aluminum	Diecast Aluminum
Operational Temp / Humidity	-20° - 45°C, 10-90% RH -4° - 113°F, 10-90% RH	-20° - 45°C, 10-90% RH -4° - 113°F, 10-90% RH
Storage Temp / Humidity	-40° - 60°C, 10-90% RH -40° - 140°F, 10-90% RH	-40° - 60°C, 10-90% RH -40° - 140°F, 10-90% RH
IP Rating (Front / Rear)	Indoor	Indoor
Certifications	CE, ETL, FCC	CE, ETL, FCC

Notes: The Specifications are for reference, actual values may vary.

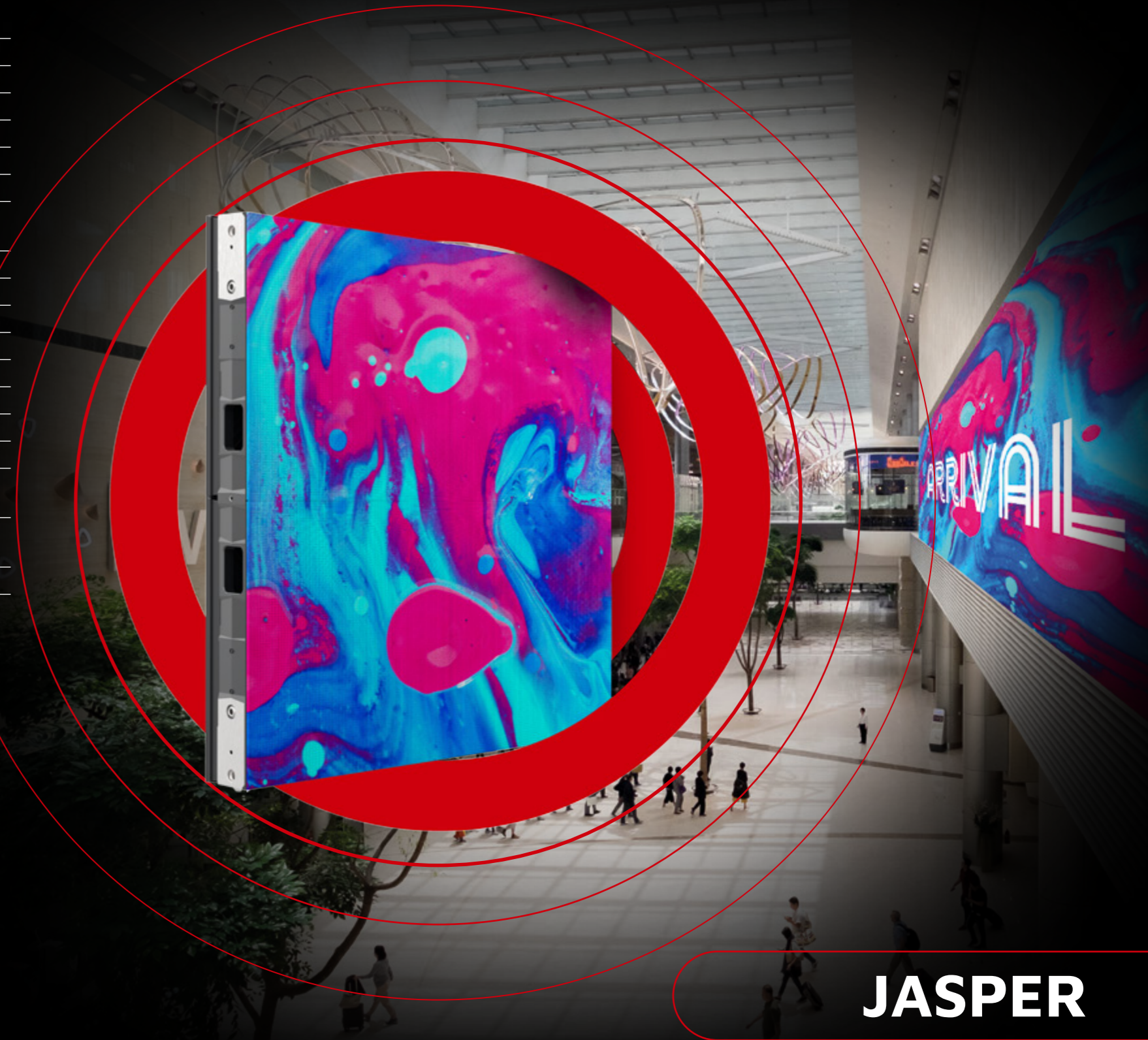
Dimensions



www.roevisual.com

ROE Visual Co., Ltd. | ROE Visual US, Inc. | ROE Visual Europe BV
 roe@roevisual.com | roe@roevisual.com | roe@roevisual.com

ROE
CREATIVE DISPLAY



JASPER

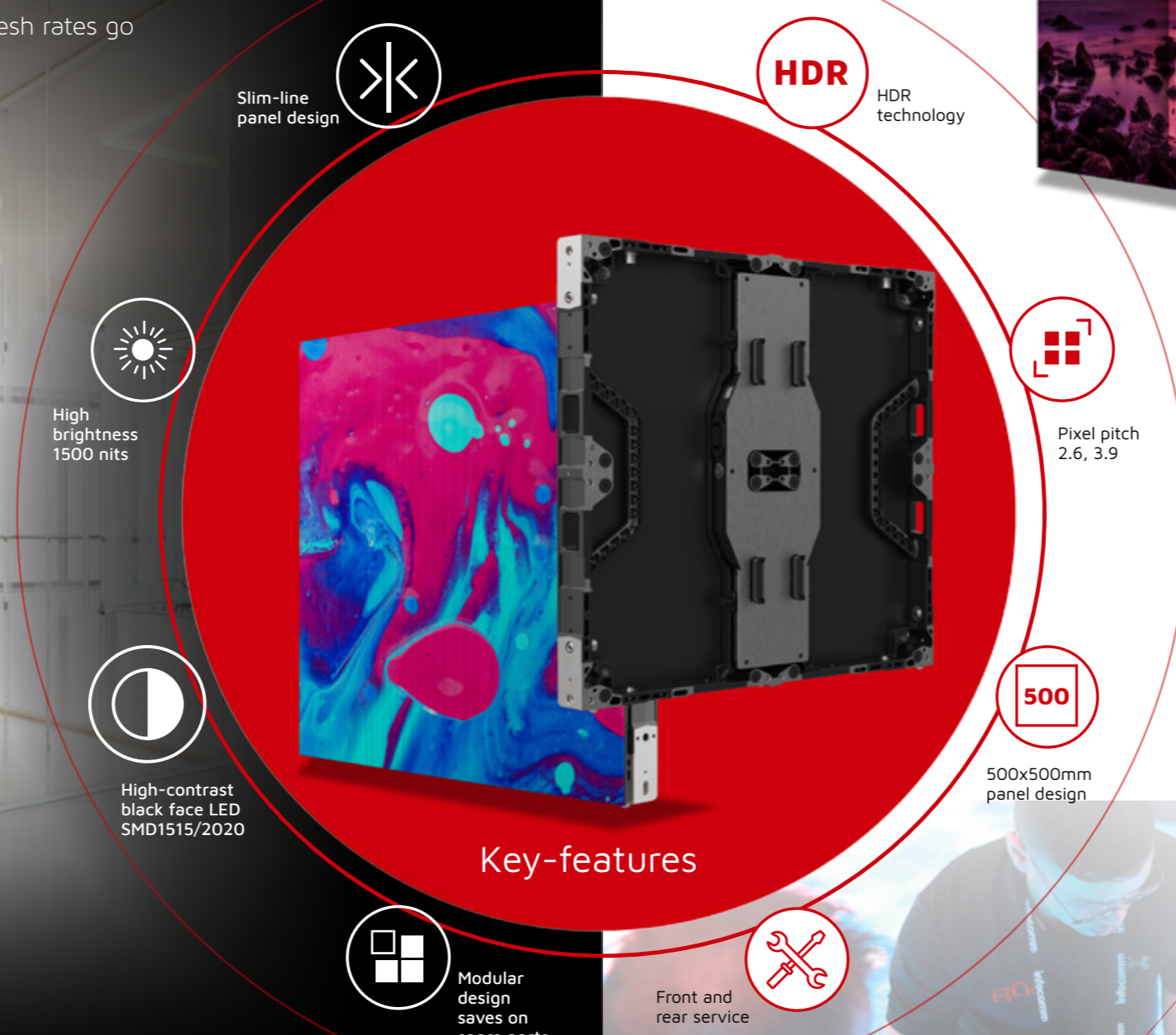
Easy installation. High-end results.

INDOOR FIXED INSTALL

Jasper LED Platform

Creating a Myriad of Possibilities

Jasper by ROE Visual is a modern LED display solution, offering uncompromised picture performance and optimal installation benefits, ideal for system integration. Deliver perfect presentations. Superb LED quality, HDR technology and high refresh rates go hand-in hand with flexible design.



Slim-line panel design

HDR
HDR technology

High brightness
1500 nits

Pixel pitch
2.6, 3.9

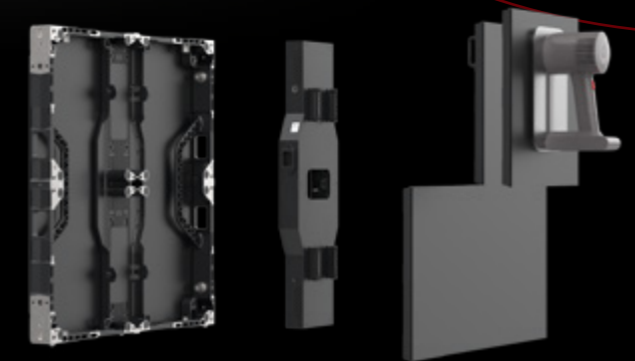
High-contrast
black face LED
SMD1515/2020

500
500x500mm
panel design

Key-features

Modular design
saves on
spare parts

Front and
rear service



HDR technology for a versatile performance

The Jasper LED panels provide an excellent visual performance due to the high contrast and robust 1515 Black LED, guaranteeing flawless image performance in all circumstances. The resulting video screen boasts 99% color cover BT.709 and 95% color cover DCI-P3 for broadcast requirements, avoiding the interference lines.

Optimal costs of ownership

No special staff is needed for basic operation and servicing of the Jasper LED panels. Servicing and maintenance of the video screen are as easy as possible. The panel modules have front service for easy replacement and the modular design saves on spare parts, reducing the maintenance costs.

Sustainable long-term solution

With its energy saving power unit and re-calibration options, the Jasper LED panel ensures years of easy operation and stable visual excellence. With the re-calculate function the panels can be easily re-calibrated based on calibration data storage.

“Creating an infinitive range of installation possibilities.”

Flat mounting due to slim-line panels

The Jasper LED panels mount flexible and easy, in a stacking or wall-mounted configuration. The panels can be mounted to almost any surface type, the 500x500mm panel size creating easy options for flexible screen sizes. The panels are mounted from the front side, while the LED modules are ready for front and rear service. The slim-line panels create a unobtrusive flat screen design.

